



Believe Strive Achieve



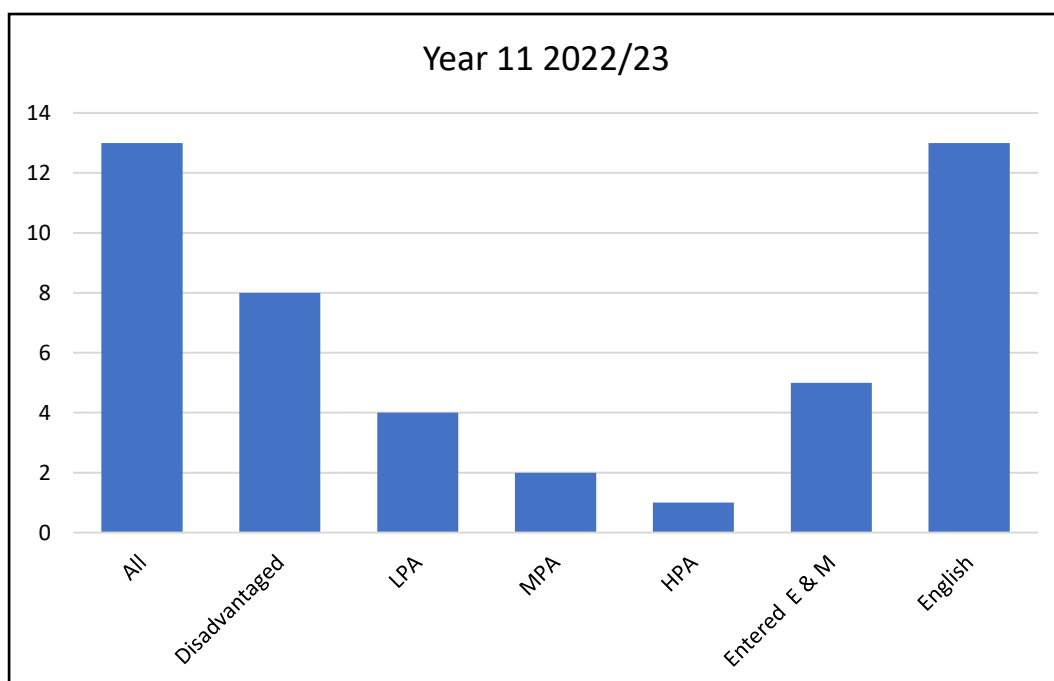
Examinations Review 2023

Contents

Cohort	Page 2
Examinations Headlines	Page 3
Number of pupils achieving Level 1 and 2 Passes	Page 4
Six Year Trend	Page 5
Vulnerable Groups	Page 6
Subject Grades	Page 7 - 8
Subjects Progress	Page 9

Cohort Comparison

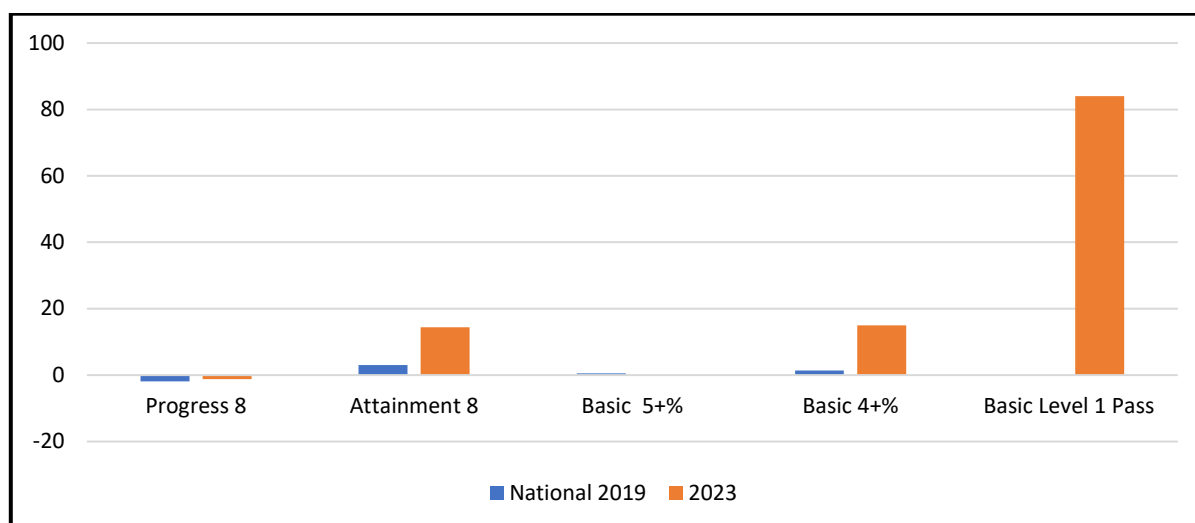
	2020	2021	2022	2023
All	17	14	14	13
Disadvantaged (Pupil Premium)	12	8	7	8
Low Prior Attaining (Key stage <100)	6	10	13	4
Mid Prior Attainment (Key stage 100-110)	7	3	0	2
High Prior Attainment (Key stage 2 >110)	3	0	0	1
Entered for GCSE English and Maths	11	13	7	5
English first Language	17	14	13	13



Key:

LPA = Low prior attainer at KS2	HPA = High prior attainer at KS2
MPA = Middle prior attainer at KS2	E & M = English and Maths

Examinations Headlines



Hailey Hall’s achievement is very good, when compared and contextualised with national data. This is due to quality of teaching learning in the school. We provide excellent interventions as and when identified by the team, as being necessary to support individuals in their progress and achievement.

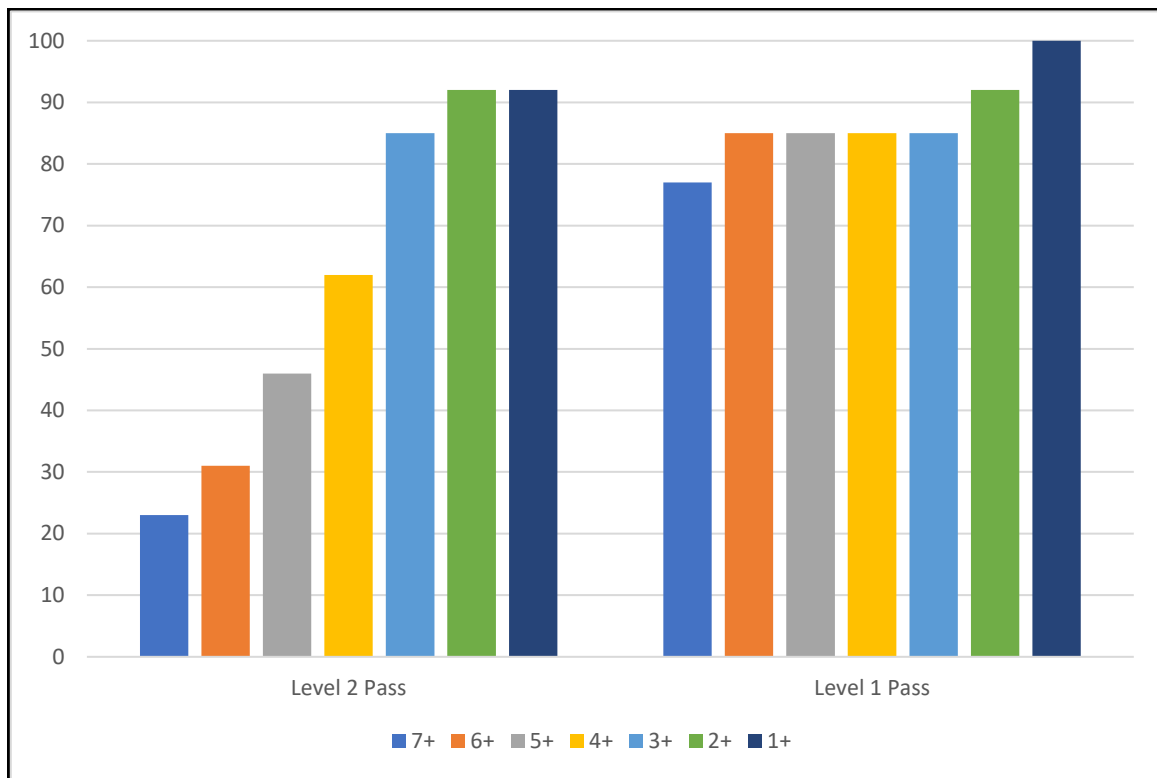
- The average attainment 8 score for our pupils was 14.4 points **COMPARED TO 2019 DATA, WHICH WAS 3 NATIONALLY FOR OTHER SPECIAL SCHOOL PUPILS IN 2019.**
- It is worth noting the attainment 8 figure using the average of all subjects that pupils study at our school and not all on the Attainment 8 official list is 26.4
- Our Progress 8 figure was -1.22 **COMPARED TO -1.84 FOR OTHER SPECIAL SCHOOL PUPILS NATIONALLY IN 2019.**
- It is worth noting that the progress 8 figure using the average of all subjects that pupils study at our school, although not all on the Progress 8 official list, is -0.47
- In 2023 15% of pupils achieved a GCSE 4 or above grades in both English and Mathematics **COMPARED TO 1.2% FOR OTHER SPECIAL SCHOOL PUPILS NATIONALLY IN 2019.**

Subgroup	Count	Progress 8	Attainment 8	Basic * 5+ %	Basic* 4+%	Basic Level 1
2019 National State Funder Special School*		-1.84	3	0.5	1.2	
Hailey Hall 2023	13	-1.22 (-0.47)	14.4 (26.4)	0	15	84

*The Basic 4+ figure is the percentage of pupils who achieved above a grade 4 in Maths and in English. The English can be in either English Language or Literature.

*2019 National State Funder Special School, Boys <https://www.gov.uk/government/statistics/key-stage-4-performance-2019-revised>

% of pupils achieving number of passes and above at Level 2 and Level 1

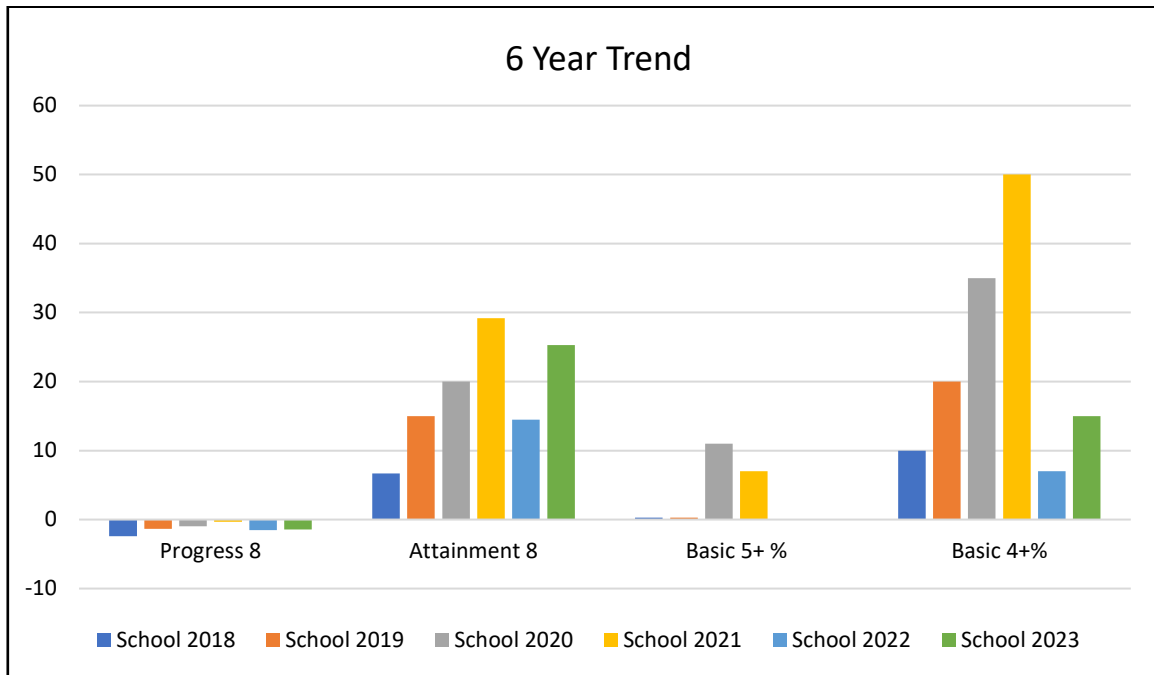


	Total	7+	6+	5+	4+	3+	2+	1+
Level 2 Pass	13	3 (23%)	4 (31%)	6 (46%)	8 (62%)	11 (85%)	12 (92%)	12 (92%)
Level 1 Pass	13	10 (77%)	11 (85%)	11 (85%)	11 (85%)	11 (85%)	12 (92%)	13 (100%)

A level 2 is either a GCSE 4 or above or a vocational Level 2 pass or equivalent.

A Level 1 pass is grade 1 – 3 in a GCSE or a Level 1 pass, merit or distinction for BTEC courses.

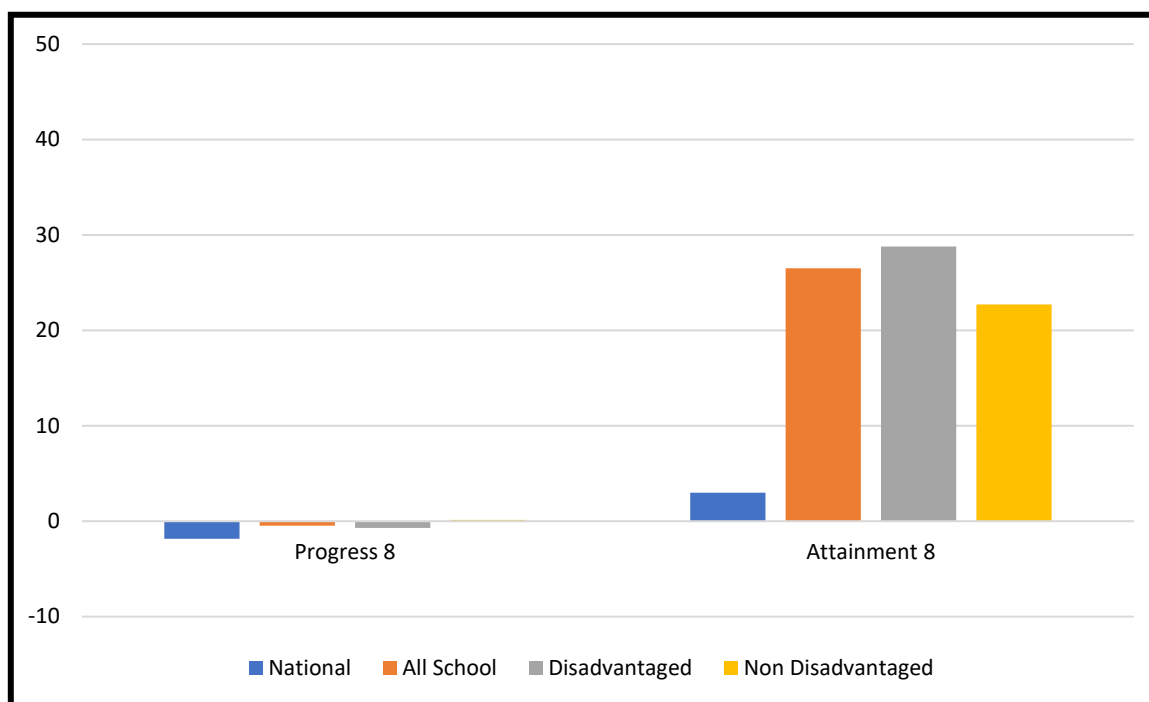
6 Year Trend



- The average 2023 attainment 8 score for our pupils was 18.3 points **COMPARED TO 15 POINTS IN 2019.**
- Our Progress 8 figure is -1.22 **COMPARED TO -1.33 IN 2019.**
- In 2023 15% of pupils achieved 4 or above grades in both English and Mathematics **COMPARED TO 20% IN 2019.**

Subgroup	Count	Progress 8	Attainment 8	Basic 5+ %	Basic 4+%
School 2023	13	-1.22 (-0.47)*	14.4 (26.4)*	0	15
School 2022	14	-1.55	14.5	0	7
School 2021	14	-0.31	29.17	7	50
School 2020	17	-0.96	20	11	35
School 2019	8	-1.33	15	0	20
School 2018	10	-2.39	6.7	0	10
*Hailey Hall 'P8' score when factoring in all HH subjects offered.					

Vulnerable Groups



Hailey Hall supports disadvantaged pupils by providing additional intervention and support.

- The attainment 8 score for our disadvantaged pupils using the average of subjects that pupil's study at our school was 28.8 points **COMPARED TO 3 POINTS NATIONALLY IN 2019 DFE CALCULATION.**
- The Progress 8 figure for our disadvantaged pupils using the average of subjects that pupils study at our school was -0.71 **COMPARED TO -1.84 NATIONALLY DFE CALCULATION.**

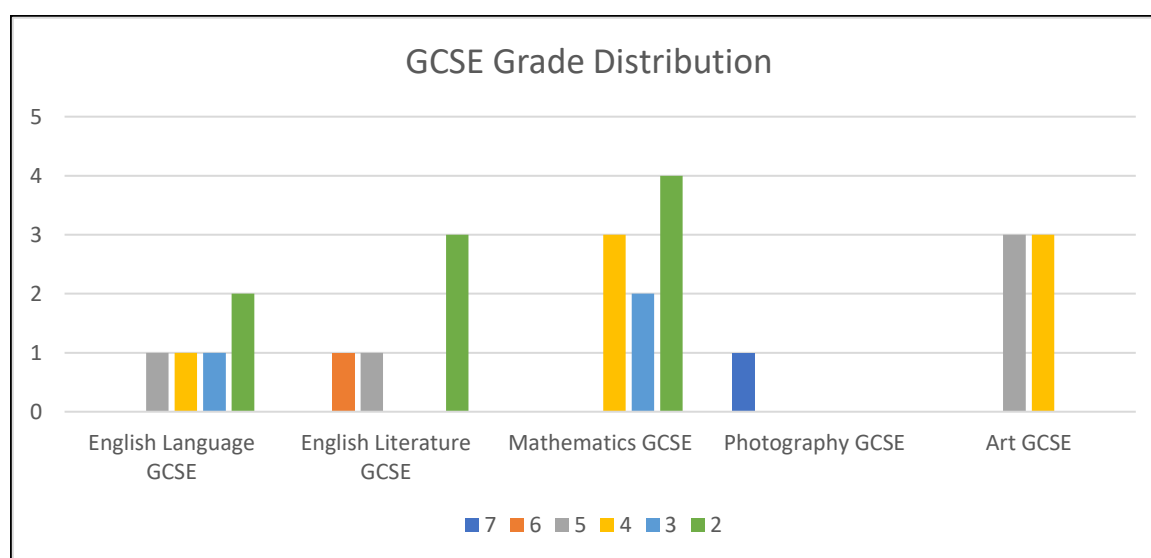
Subgroup	Count	HHS Progress 8 School	Nat* 2019	Count	Attainment 8 School	Nat* 2019
All School	7	-0.47	-1.84	13	26.5	3
Disadvantaged (PP)	5	-0.71	-1.87	8	28.8	3
Non Disadvantaged (Non PP)	2	0.13	-1.68	5	22.7	3
Low Prior Attaining	4	0.32	-	4	28.5	-
Mid Prior Attainment	2	-1.18	-	2	38	-
Hight Prior Attainment	1	-2.23	-	1	44	-
Entered for GCSE English and Maths	3	-0.9	-	5	35.6	-

*2019 National State Funder Special School, Boys <https://www.gov.uk/government/statistics/key-stage-4-performance-2019-revised>

Subject Grades

	7	6	5	4	3	2	1	U
English Language GCSE			1	1	1	2		
English Literature GCSE		1	1			3		
Mathematics GCSE				3	2	4	1	1
Art GCSE			3	3				
Photography GCSE	1							

The table above and graph below show the grade distribution for our GCSE qualifications. It is very encouraging to see the number of GCSE 4+ achieved across the subjects, especially in art where all pupils achieved at least a GCSE 4. It is positive to see the results for English language and literature where 4 GCSE 4+ were achieved, when compared to only 1 GCSE 4+ in 2022. This demonstrates the impact of the work done by the English department with support from HFL to develop the English curriculum over the academic year. Maths has again achieved 3 GCSE 4+ and has therefore matched 2022 achievements, which is again very positive. It was fantastic to see that due to the adaptability of our curriculum and dedication of our art teacher, we were able to achieve a GCSE 7 in photography. This particular pupil showed a true passion and interest in photography and as a result, we adapted our curriculum to make this possible and allow this pupil to go on and achieve in this subject.



The table below shows the grade distribution for all vocational qualifications. It is very encouraging to see all pupils achieving at least a level 2 pass in craft, food and cookery and employability. Achievements in science are also excellent with the majority achieving at least a level 2 pass and some going onto a merit and distinction. It is also very encouraging to see the progress made in music where 3 pupils achieved a level 2 pass and 1 pupil achieving a merit. This is a huge improvement on 2022 where no pupils achieved any level 2 qualifications in this subject. It is worth noting also the level 2 qualifications achieved in English and maths, which is equivalent to a level 2 pass, is in addition to the GCSE results achieved.

	Level 2 Distinction	Level 2 Merit	Level 2 Pass	Level 1 Distinction	Level 1 Merit	Level 1 Pass	U
Functional Skills English Level 1						11	2
Functional Skills English Level 2			6				4
Functional Skills Maths						1	
Number and Measure Level 1						4	1
Edexcel Award Algebra			2				
Pearson Functional Skills - Maths						1	
Entry Level 3 Functional Skills Maths						3	
Science BTEC	1	2	7			1	1
Sport BTEC			2			4	
Music BTEC		1	3			1	1
I Media				3	2		
Food and Cookery NCFE	1		6				
Creative Craft NCFE			5				
Employability			11				

Subjects Progress based on Progress 8 estimate

The tables below show the number of pupils in this cohort who achieved their FFT target. FFT (Fisher Family Trust) bases estimates on each individual's attainment at the end of KS2 as well as, gender and month of birth. As an example, for English language below, 1 pupil was expected to achieve a GCSE 5 (P8 estimate) but actually achieved a 6, hence the 1 in the green cell. Estimates can only be made for those with KS2 data, so those without this data are still represented, but there are no green cells to show FFT targets.

English Language GCSE

P 8 Estimate	U	1	2	3	4	5	6	% Expect Progress
6						1		0
5							1	100
4								-
3			1					0
2								-
No Ks2			1	1				

Functional Skill English highest Level 1 and Level 2

P 8 Estimate	U	L1P	L2P	% Expect Progress
6			1	100
5			1	100
4		1		0
3		1	1	100
2	1		1	50
No Ks2	1	3	2	

English Literature GCSE

P 8 Estimate	U	1	2	3	4	5	% Expect Progress
6					1		0
5						1	100
4							
3			1				0
2							
No Ks2			2				

Maths GCSE

P 8 Estimate	U	1	2	3	4	5	% Expect Progress
6					1		0
5					1		0
4				1			0
3			1	1			50
2	1				1		50
No Ks2		1	3				

Art GCSE

P 8 Estimate	U	2	3	4	5	6	% Expect Progress
4					1		100
3				1			100
2					2		100
No Ks2				2			

Photography GCSE

P 8 Estimate	U	2	3	4	5	6	7	% Expect Progress
4								-
3								-
2							1	100

Science BTEC

P 8 Estimate	U	L1P	L2P	L2M	L2D	% Expect Progress
6				1		100
5					1	100
4			1			100
3			1	1		100
2		1	1			100
No Ks2	1		4			

Sport BTEC

P 8 Estimate	U	L1P	L2P	L2M	L2D	% Expect Progress
6				1		100
5						=
4		1				0
3						=
2		1	1			100
No Ks2		2				

Ocr I Media

P 8 Estimate	U	L1P	L1M	L1D	L2P	L2M	L2D	% Expect Progress
6				1				0
5				1				0
4								-
3				1				100
2								-
No Ks2			2					

Employability City and Guilds

P 8 Estimate	U	L1P	L2P	% Expect Progress
6			1	100
5			1	100
4			1	100
3			2	100
2			2	100
No Ks2			4	

Food and Cookery NCFE

P 8 Estimate	U	L1P	L1M	L1D	L2P	L2M	L2D	% Expect Progress
6								-
5							1	100
4					1			100
3								-
2					1			100
No Ks2					4			

BTEC Music

P 8 Estimate	U	L1P	L2P	L2M	L2D	% Expect Progress
6						-
5				1		100
4						-
3			2			100-
2						
No Ks2	1	1	1			

Creative Craft NCFE

P 8 Estimate	U	L1P	L2P	% Expect Progress
6			1	100
5				-
4				-
3			2	100
2			1	100
No Ks2			1	

Edexcel Number & Measure

P 8 Estimate	U	L1P	L2P	% Expect Progress
6		1		0
5				-
4				-
3				-
2	1			0
No Ks2		3	1	

Edexcel Award Algebra

P 8 Estimate	U	L1P	L2P	% Expect Progress
6			1	100
5			1	100
4				-
3				-
2				-
No Ks2				-

Pearson Functional Skills - Maths

P 8 Estimate	U	L1P	L2P	% Expect Progress
6				-
5				-
4		1		0
3				-
2				-
No Ks2				-

Entry Level 3 Functional Skills Maths

P 8 Estimate	U	L1P	L2P	% Expect Progress
6				-
5				-
4				-
3				-
2		1		100
No Ks2		2		

The results above demonstrate excellent progress with 100% of pupils achieving, or even exceeding, their FFT estimates in Employability, Science, Photography, Art, Craft, Music, Food and Cookery, Edexcel Award Algebra, Entry Level 3 Maths and the vast majority reaching or exceeding their targets in Functional Skill English. With all of the vocational subjects, it is very encouraging to see the number of level 2 PASS qualifications being achieved, bearing in mind that these are equivalent to a GCSE 4.